

FALLPROTEC

Height Safety Products

+352 26 55 09 30 | www.fallprotec.com

FALLPROTEC SECUROPE CABLE LIFELINE SYSTEM ON COLD DECK ROOF





📍 Dudelange, Luxembourg

CABLE LIFELINE FOR FALL ARREST, FALL RESTRAINT & MAINTENANCE OF INDUSTRIAL ROOFS.

EN795:2012 Type C | CEN/TS 16415:2013
ANSI/ASSP Z359.6: 2009
OSHA1910 Subpart D
CSA Z259.16



Falls from height account for 35% of fatal injuries at work in the United Kingdom in 2021.*

Cold deck roofs, also named corrugated metal sheet roofs, are especially prone to accidents as they are sloped, slippery when humid and the thin metal sheet can degrade with time.

Since industrial roofs require maintenance for the solar panels, ventilation systems and other equipment, the workers must access the roof safely. The Securope 2012 lifeline, combined with the proper PPE equipment, enables the worker to reach safely any point of the roof.

Links:

*<https://www.hse.gov.uk/statistics/fatals.htm>

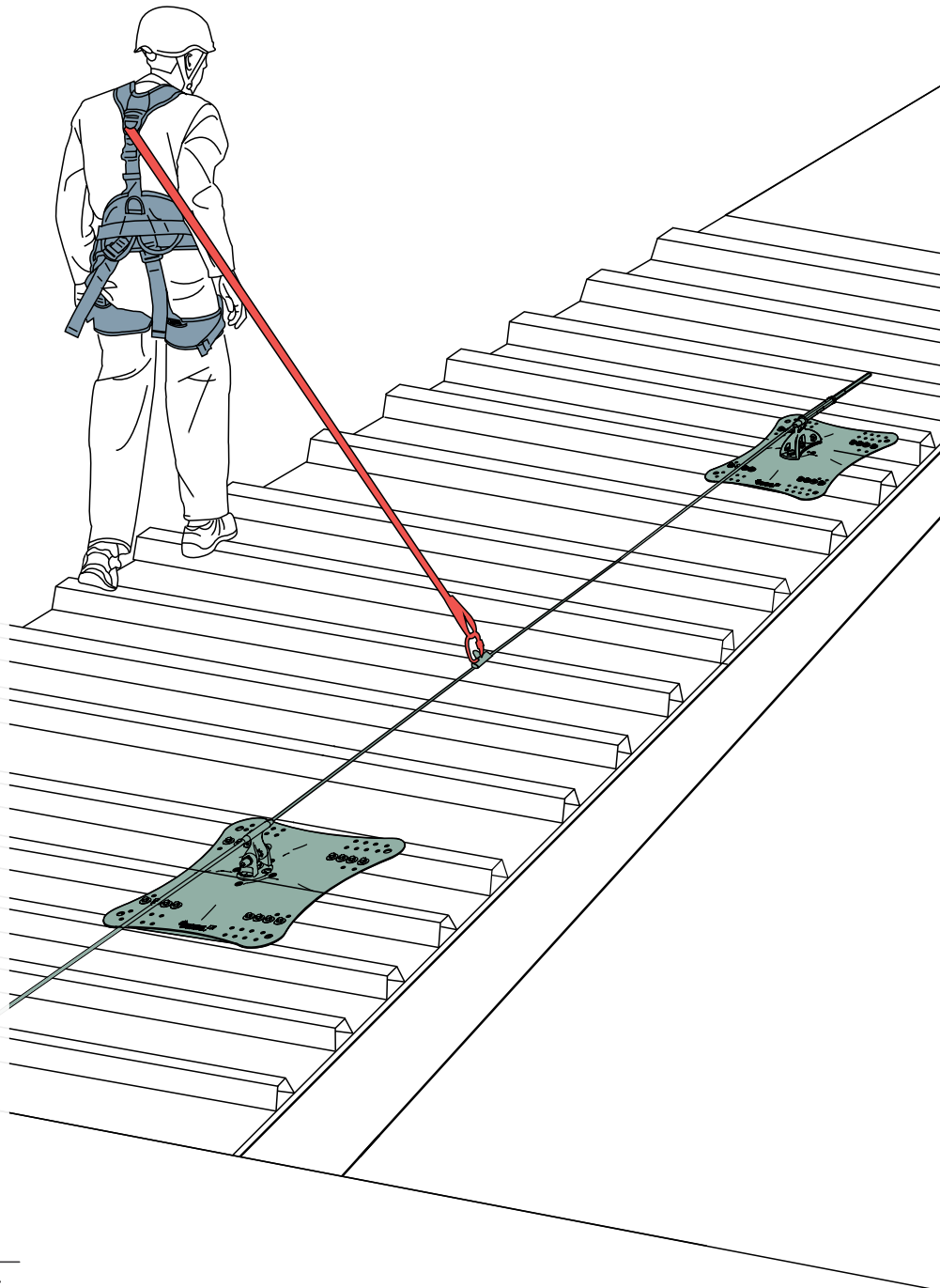
E.U. statistics: <https://bit.ly/3GwbVhs>

USA Statistics: <https://bit.ly/3siZPmM>

A reliable system for all types of Cold Deck Roofs

The SecuRope cable lifeline system on cold deck roof has been tested and certified according to European standards.

- Number users (EN) = Up to 4 users
- Number of users (ANSI & CSA) = 2 users
- Energy absorbing.
- Surpassable intermediate anchors.
- Supplied with self-drilling screws.
- Absorbs dilatation and contraction of roof sheets.
- A distance of 12 meters (39'4") maximum between two anchors.
- Supplied with EPDM roofing tape to ensure water tightness .
- Compatible with sloped roofs and steeply pitched roof.
- Compatible with Securope, Securail and Securail Pro.
- Lifeline component in high grade stainless steel AISI 316, compatible with marine environment.



Applications:



Industry



Fall
restraint



Fall
Arrest

SecuRope LifeLine on Cold Deck Roof

Lifeline Securope 2012 fixed on corrugated metal sheet roofs allows protecting multiple workers against the risk of fall.

Thanks to its robust design, the Securope 2012 is a reliable system that enables a durable maintenance of the roof.

 Click here to follow the product YouTube playlist

EN795:2012 Type C | CEN/TS 16415:2013

ANSI/ASSP Z359.6: 2009

OSHA1910 Subpart D

CSA Z259.16

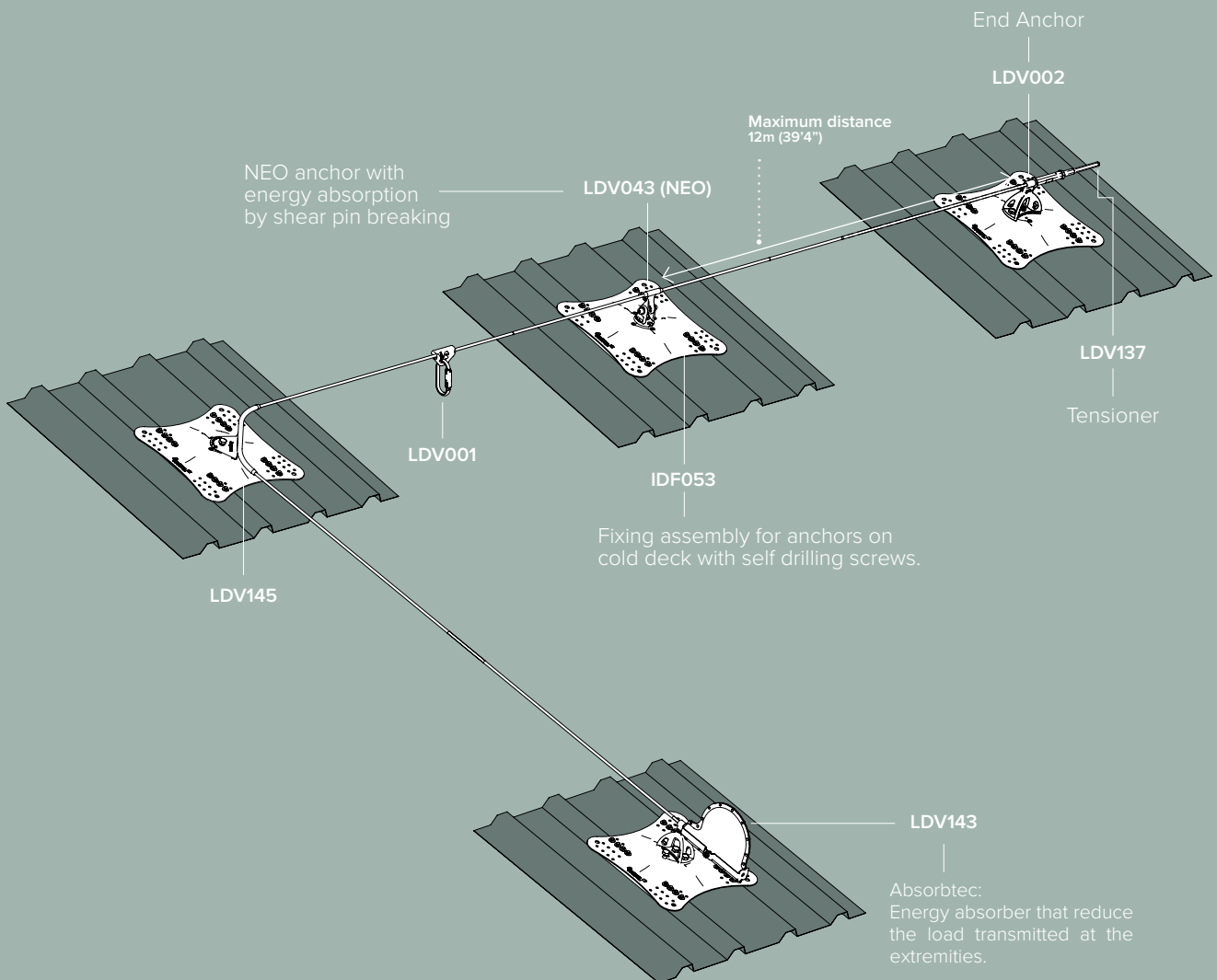


(EN)
x 4

(ANSI&CSA)
x 2

AISI
316

AISI
304



SecuRope LifeLine on Cold Deck Roof components

Glider

Glider with locking mechanism for roofs with more than 15° slope. Enables the user to walk safely along the entire lifeline.

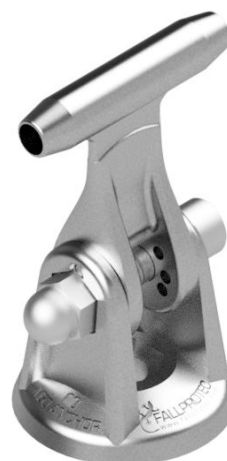
LDV275



Neo Intermediate Anchor

It's integrated with the energy absorber in case of a fall, it will reduce the efforts and absorb the energy, and it's passable through.

LDV043



Absorbtec

Energy absorber that reduce the load transmitted at the extremities.

LDV143



Fixing Assembly

Assembly for end anchor - LDV023

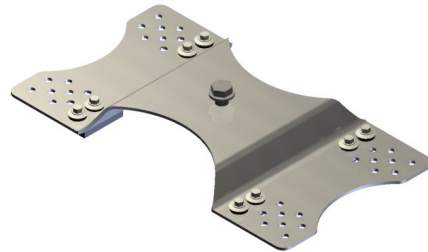


High stainless steel Fixing assembly for end anchor on Cold Deck

- Compatible with marine environment and with steel sheets ≥ 0.5 mm.
- Delivered with sealing tape and either self-drilling screws or rivets.

KG 2,70 LBS 5.95 AISI 304

Assembly for intermediate anchor - LDV036



Fixing assembly for intermediate anchor on Cold Deck

- Compatible with steel sheets ≥ 0.63 mm.
- Delivered Self-drilling screws IDF046 and sealing tape IDF040.

KG 1,50 LBS 3.30 AISI 304

Fixing bracket - IDF053

Fixing assembly for anchors on cold deck

- Compatible with steel sheets $\geq 0,5$ mm.
- Stamped bracket in metalized steel with lamellar zinc coating which makes it more economic and resists to marine atmosphere.
- Esthetic and competitive design for your European market
- Delivered with Self drilling screws IDF046 and sealing tape IDF040.

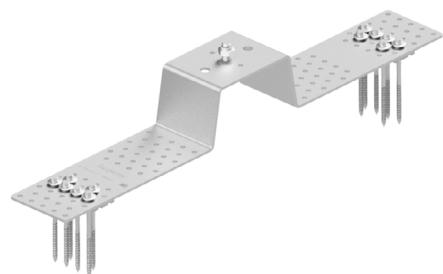
KG 3,40 LBS 7.49



LDV037

Fixing bracket for old or damaged corrugated metal sheet
The long self-drilling screws fixing bracket to the structural beam.

KG 3,10 LBS 6.83 AISI 304



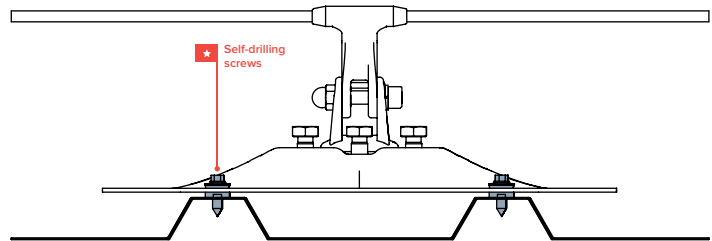
Component Code	Minimum metal sheet thickness (KN)
LDV023 / IDF053	≥ 0.5
LDV023 + LDV036	≥ 0.63

Fixing details

Short Self-drilling Screws

The Fallprotec self-drilling screws IDF046 are specially designed for fall arrest applications. The self-drilling screws hold durably on the roof and have a high pull-out force.

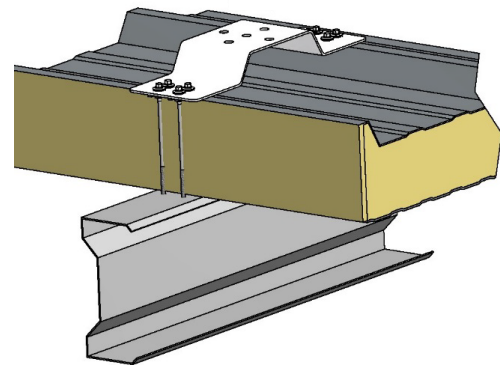
Delivered with an EPDM washer on the head of the screw and an EPDM tape that is placed between the roof & the bracket.



Long Self-drilling Screws

When the integrity of the roof is difficult to verify or that the roof is worn out, then Fallprotec recommends installing the fall arrest lifeline with self-drilling screws to the structural purlins.

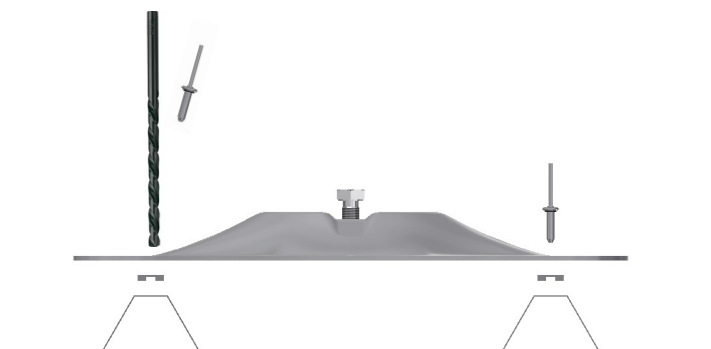
The roof purlins being quite thick, the lifeline is then fixed to an independent and stronger building element.



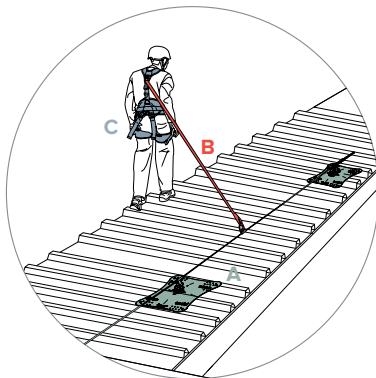
Rivet

Fallprotec offers also the possibility to fix the brackets with special rivets of 6,3mm (0, 248") diameter.

The rivets require a pre-drilling during installation but have the advantage to have a large contact surface with the metal roof.



Mounting equipment



A

Anchorage

Fallprotec has designed an entire range of fixing assemblies suitable for host structure types. The internal engineering department of Fallprotec also offers bespoke fixation assemblies on demand.

Fallprotec lifeline systems:

All the components of the SecuRope Cable Lifeline on Cold Deck Roofs are in stainless steel, designed to be extremely resistant to corrosion, fire and heat which therefore a greater durability and sustainability.

Without forgetting its aesthetic appearance, the SecuRope Cable Lifeline on Cold Deck Roofs is suitable for intensive use in complex habitats especially in the marine environments.

B

Connecting Devices

PPE Equipment connecting the operator to the system, restraining them in case of a fall.

The PPE are designed to limit the energy transmitted to the user to a maximum of 6KN.

Fallprotec PPE:

Self retractable lanyard

IHWS



 x 1	 3,70	 8,15
---	--	--

With aluminium casing and galva steel rope.


Single lanyard 2 m

HAR010



EN354/355/362

 x 1	 0,50	 1,1	 2m 78,7"
---	--	---	---

 x 2
20mm (0,78") opening Zinc plated steel

With energy absorber

C

Body Support

A safety harness is a personal protective equipment (PPE) that is designed to catch a person in the event of a fall while working at height. Our Prolight harness diffuses fall arrest energy across the shoulders, thighs and pelvis.

Fallprotec PPE:

Harness Prolight

HAR001 / 002 / 003



EN361:2012

 x 1	 0,93	 2,05
---	--	--

Resistant, lightweight fabric. Comfortable for the user.

Ergonomic helmet for works at height

HAR087

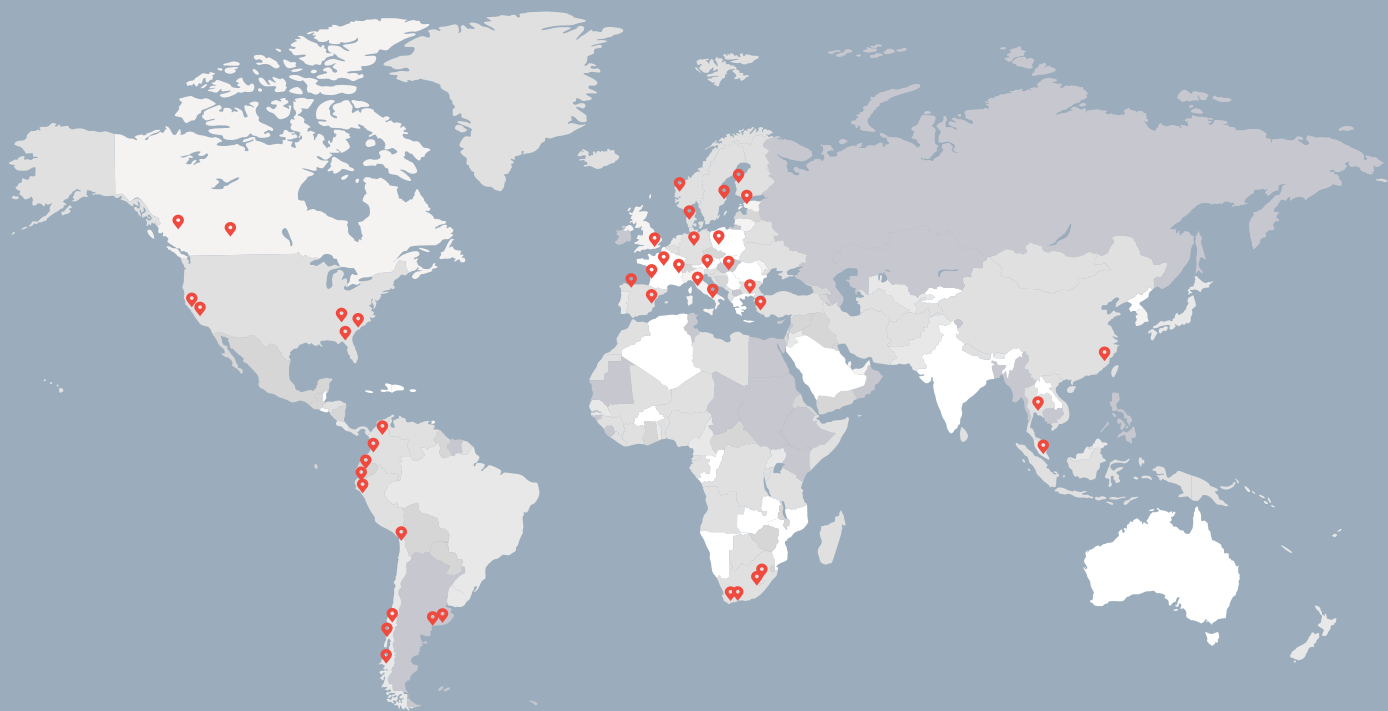


EN12492

 x 1

Fallprotec's SecuRope on Cold Deck Roof worldwide

[Click here to view more
case studies worldwide
on our website](#)



CHOOSING FALLPROTEC MEANS

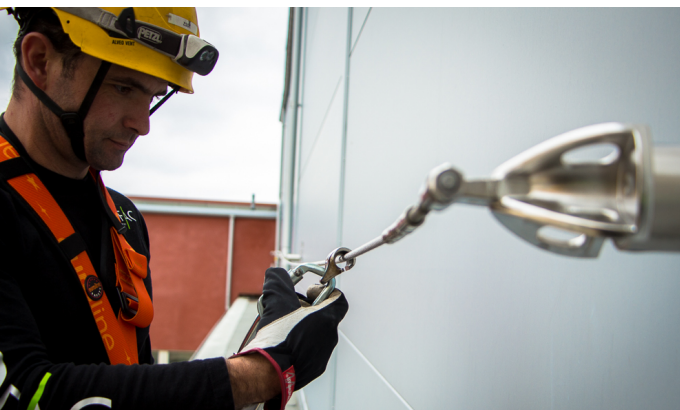
- One reference for global assistance
- Certified by notifying bodies as per latest European standard
- Quality control: ISO9001:2015.
E.C. Quality of Production « Article 11D »
- Product liability insurance
- Warranty
- One-Stop-Shop



📍 Chimney maintenance
Luxembourg, Luxembourg



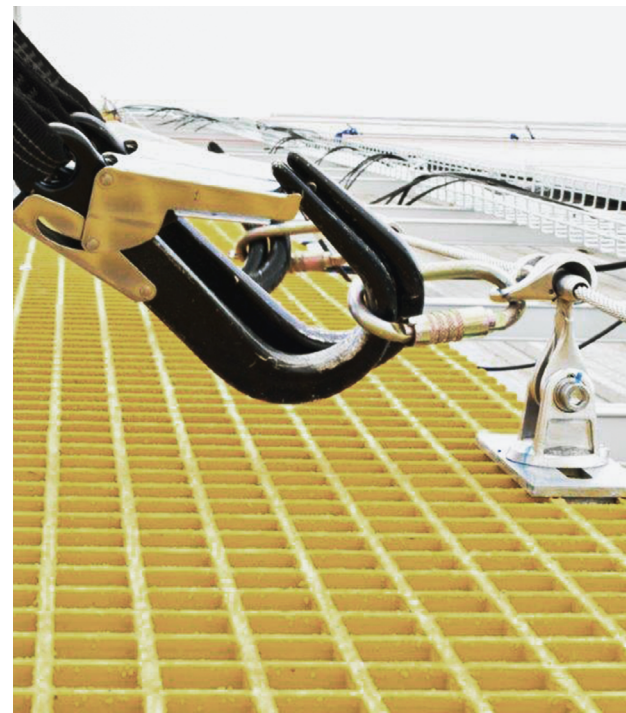
📍 Karlstad University
Karlstad, Sweden



📍 Steel factory
Githiou, Greece



📍 Maintenance of Huawei factory
Bangkok, Thailand



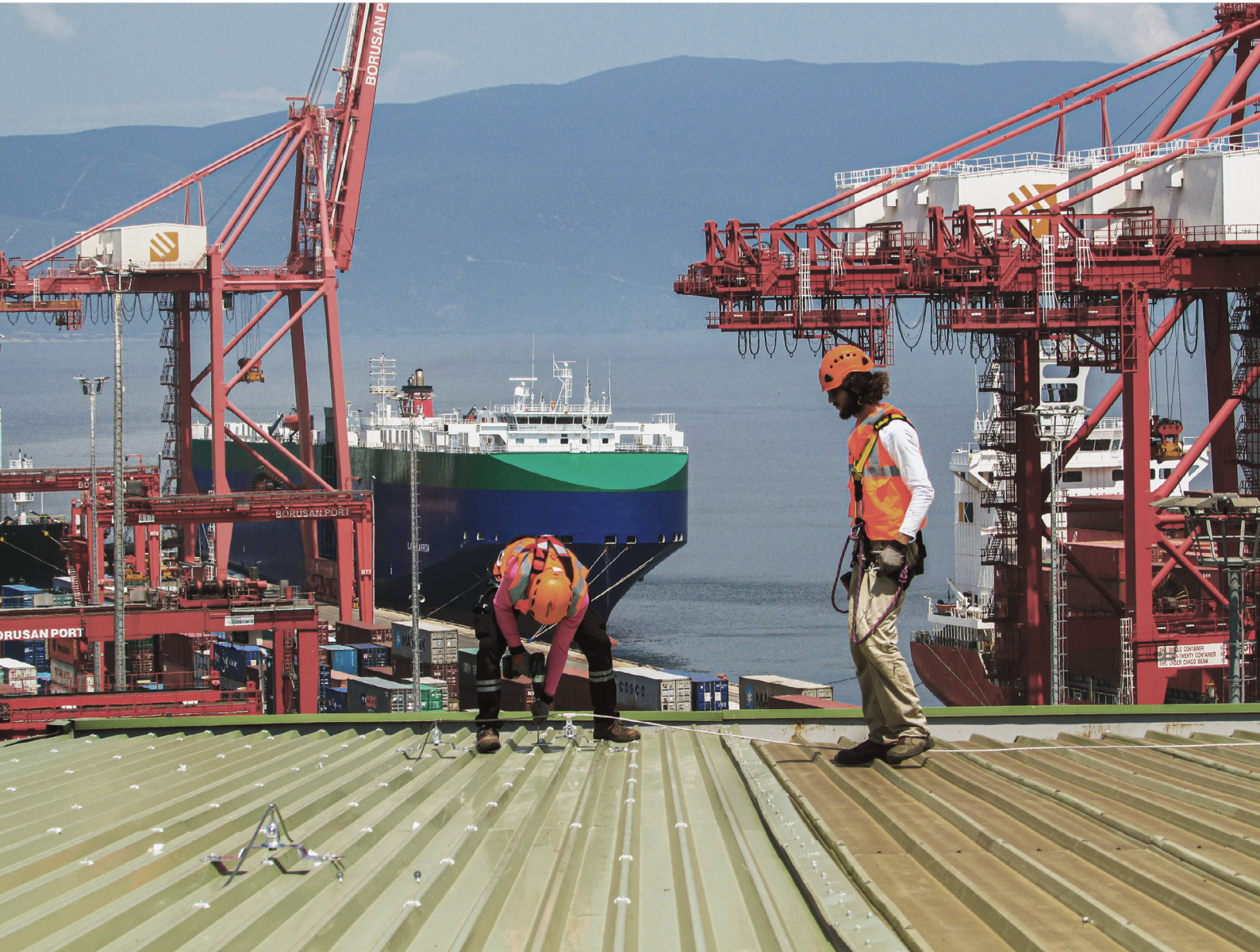
📍 Saint Gobain factory
Gliwice, Poland



📍 Sea port logistical hub
Szczecin, Poland



📍 Maintenance of Arcelor Mittal's roof
Borcelik, Turkey



FALLPROTEC SA

ZARO 2-4 rue Gustave Loosé
8346 Grass
Luxembourg

T: +352 26 55 09 30
marketing@fallprotec.com

FALLPROTEC SL

Eduard Calvet i Pintó 4
Pol. Ind. Vallmorena
08339 Vilassar de Dalt
España

T: +34 93 114 22 31
info@fallprotec.es

FALLPROTEC ITALY

Via Giovanni Falcone 23
24050 Zanica Bergamo
Italy

T: +39 375 713 8515
va@fallprotec.com

FALLPROTEC USA

3500 S Dupont Hwy
Dover, DE 19901
USA

T: +1 205 388 0548
usa@fallprotec.com

FALLPROTEC ME

JLT, Mazaya Business Avenue,
Tower BB1, Oce 1108
P. O. Box 487115
United Arab Emirates

T: +971 4 399 3764
eh@fallprotec-me.com

+352 26 55 09 30
www.fallprotec.com

Follow us

fallprotec |    

FALLPROTEC

Height Safety Products

