

**FALLPROTEC**

Height Safety Products

+352 26 55 09 30 | [www.fallprotec.com](http://www.fallprotec.com)

# FALLPROTEC

## DAVIT ARMS FOR SUSPENDED EQUIPMENT







📍 South Africa

## ROBUST SYSTEM FOR SUSPENDED EQUIPMENTS

EN1808:2015 | Suspended Platforms  
EN795:2012 | Rope Access (EU Standard)  
BS8610:2017 | Rope Access (UK Standard)



The davit for work in suspension is installed on the roof or any other structure and allowing a worker to carry out facade cleaning and maintenance works.

The davit arm is compatible with rope access technicians, RopeClimber hoists or glass replacement units.

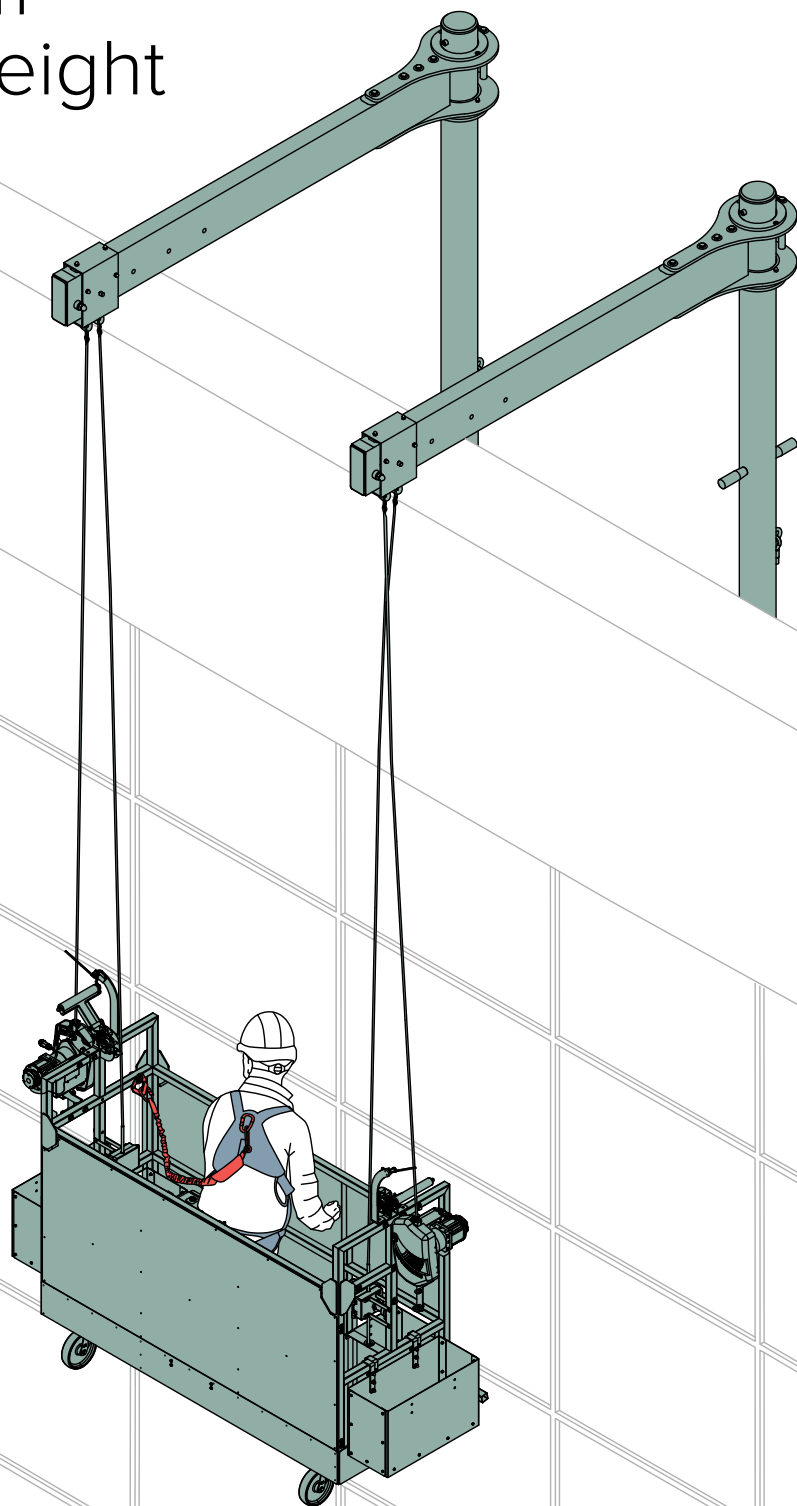
The davit is fixed on a series of sockets, installed along the parapet and at regular intervals.

# A Robust system for working at height

The Davit Arm has been tested and certified according to European standards.

- Discrete solution, easily hidden lightweight solution.
- Usable by rope access specialists, RopeClimber hoists and cradles alike.
- Bespoke designs upon request.
- Possibility of custom-made solutions with the Fallprotec's engineering department.
- WWL -Working Load Limit-  
WWL = 1 person 120 kg  
( or 2 in case of rescue )  
WWL = 500 kg for glass replacement\*

\*For higher loads, please contact Fallprotec's engineering department a customized solution.



Applications:



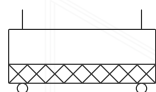
Industrial



Buildings



Rope  
Access



Platform

# Davit Arm on roof socket

Removable davit designed to suspend a worker to carry out maintenance or cleaning work on a facade. The davit can be used by a rope access specialist, by a RopeClimber chair or by a one-person RopeClimber cradle.

The davit is fixed to the roof with sockets installed permanently on the perimeter of the building. At the end of the work, the davit is dismantled and stored.

EN 1808:2015

EN795:2012

EN8610:2017



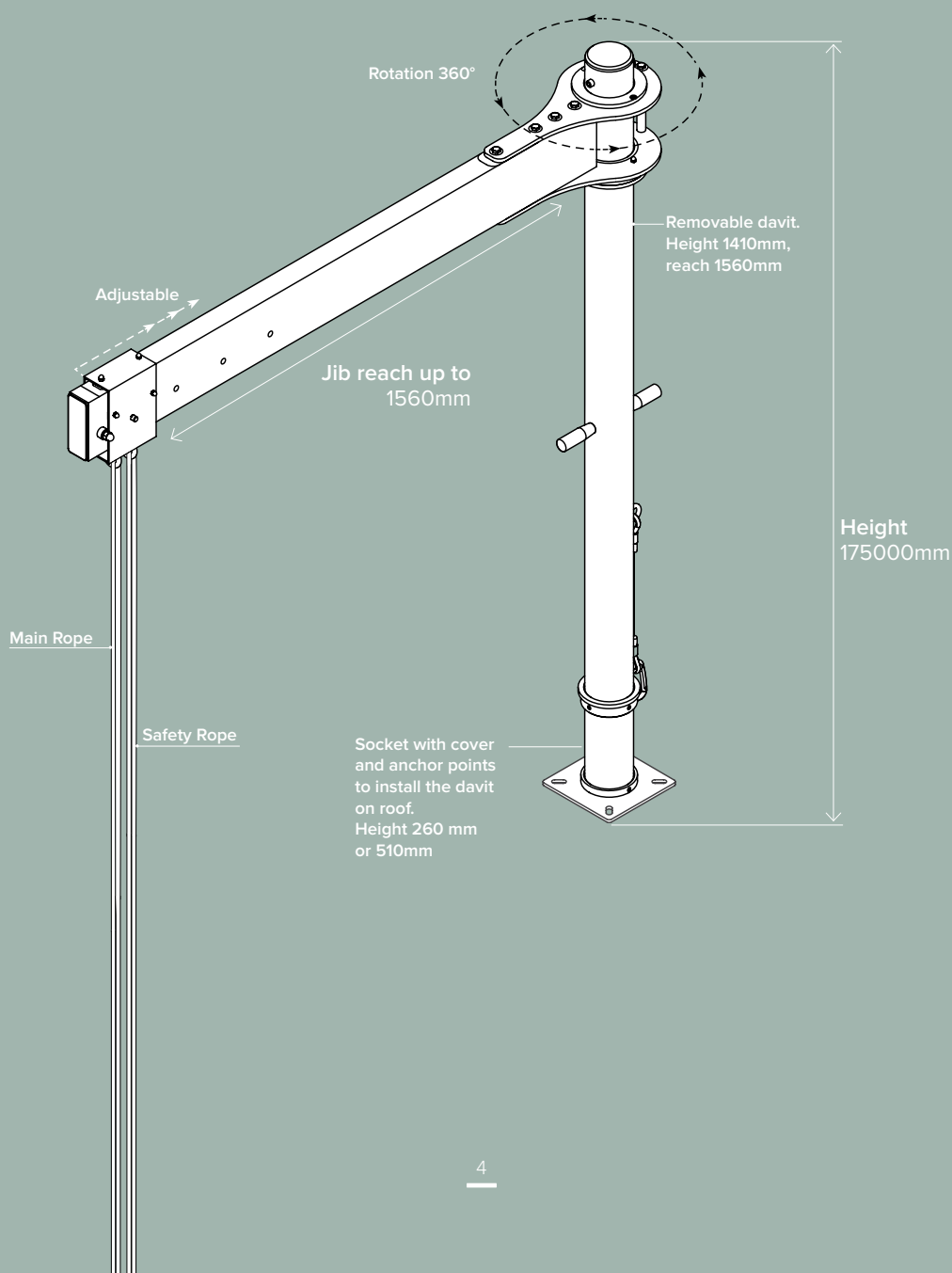
(EN) x2  
(BS) x1



6060T6



Click here to  
follow the product  
YouTube playlist

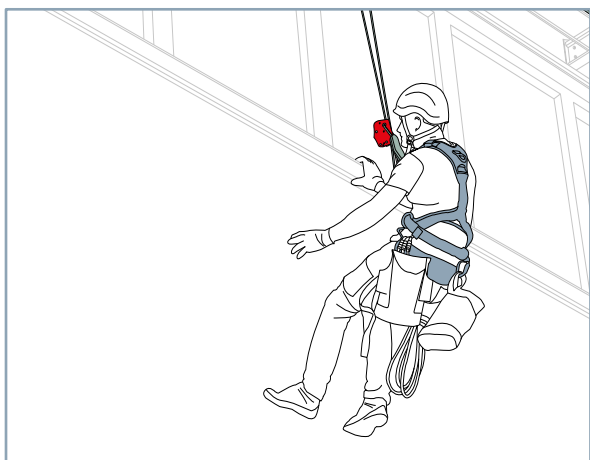




# Suspended Equipments

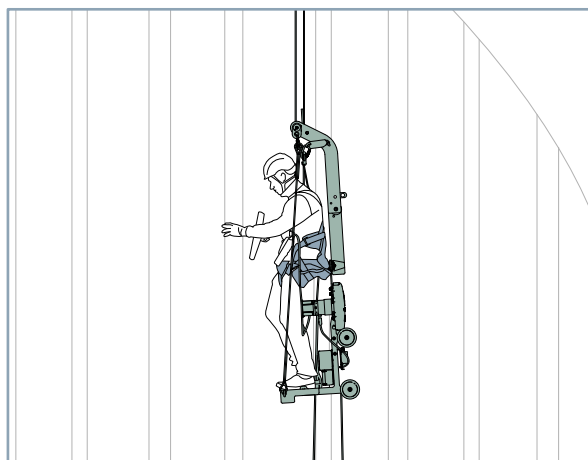
## Rope Access Technician

A rope access technician, certified for climbing skills, employs a double-rope system to access challenging vertical environments.



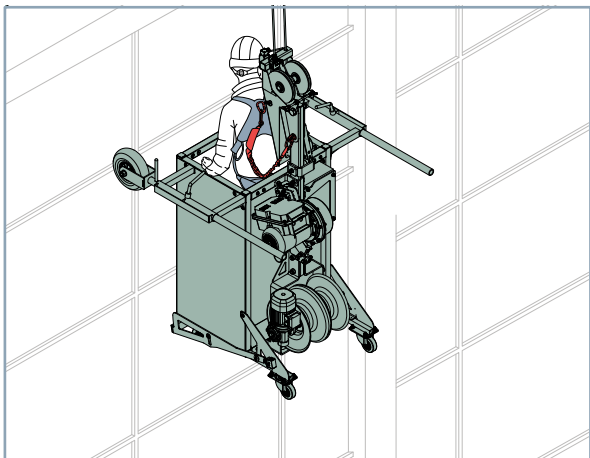
## RopeClimber Stand-Sit

The RopeClimber is a battery powered modular design, available in different configurations: a Stand chair, a Bosun Chair, as a Backpack or on a cradle.



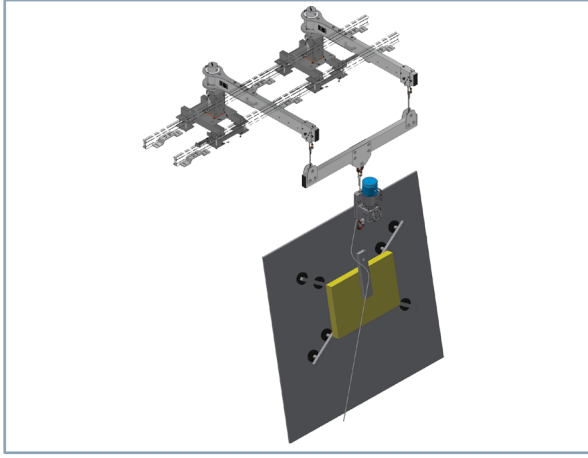
## RopeClimber one or two-person platform\*

The RopeClimber is an autonomous hoist for the lifting of one or two persons. The machine moves up by a lifting rope and it is secured by a safety rope with ASAP fall arrester.



## Glass Replacement Unit (GRU)\*

Glass replacement units serve an important part of removing and replacing a damaged or broken glass panel, such as in windows or doors, with a new one to restore functionality and aesthetics is referred



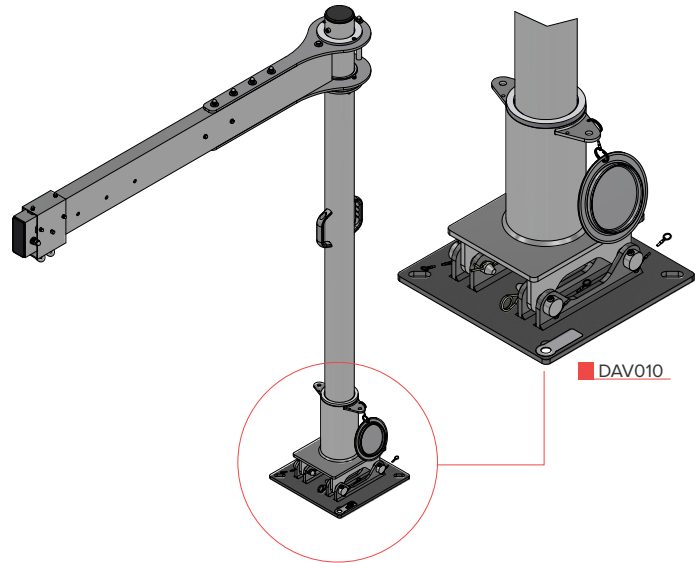
\*Please do not hesitate to reach out to Fallprotec's technical sales department for further or additional information.

# 1500mm Models



## Hidden base model 1500mm

The hidden base is typically concealed below a wooden deck. It allows to have an invisible suspended access mean on terrasses accessible by the public. The davit arm is then used in conjunction with an adaptor.



DAV010

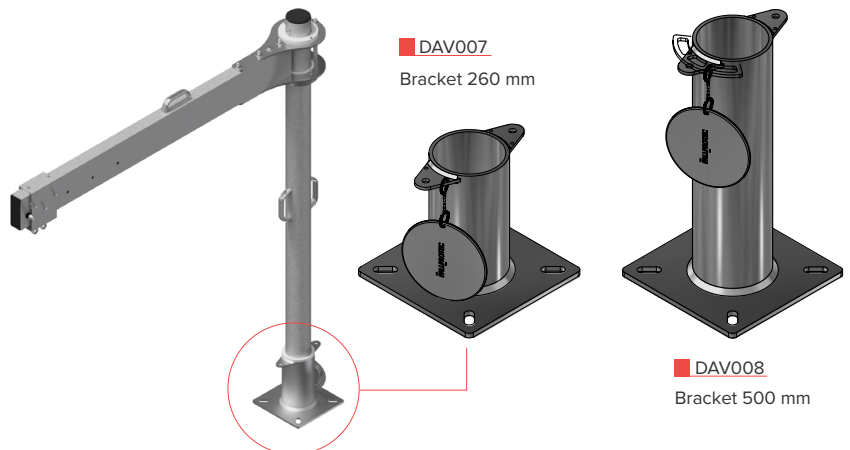


## On ground model 1500mm

The standardized ground bases exist in two models:

- The 260mm base DAV007 is for roofs with up to 100mm of hydroinsulation.
- The 500mm base DAV008 is for roofs with up to 350mm of hydroinsulation.

Delivered with an aluminium cap, this highly durable stainless steel base can be mounted on concrete or steel structures.



DAV007

Bracket 260 mm

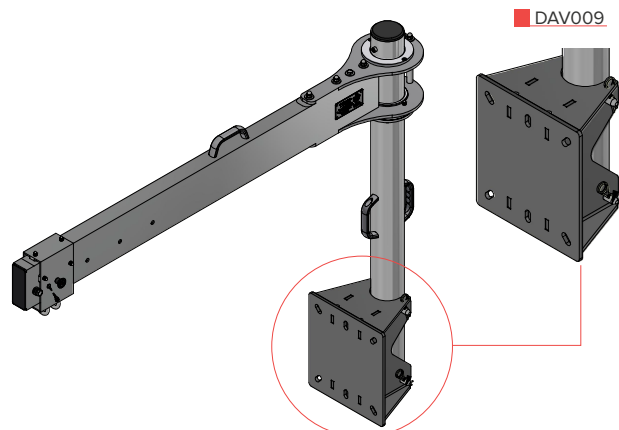
DAV008

Bracket 500 mm



## On Parapet model 1500mm

The parapet mounted bracket can be mounted on any parapet with a minimum height of 400mm above the hydroinsulation. The davit bases are custom made depending of the characteristics of the parapet.



DAV009



# 2300mm Models



## Base model 2300mm

The hidden base is typically concealed below a wooden deck. It allows to have an invisible suspended access mean on terrasses accessible by the public. The davit arm is then used in conjunction with an adaptor.

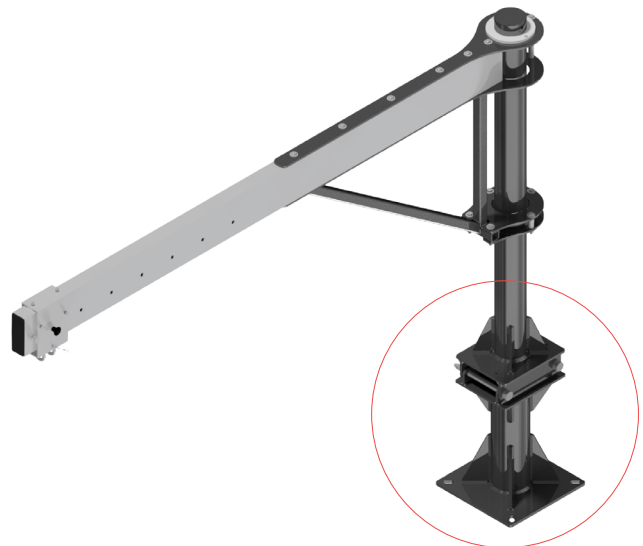


## On ground model 2300mm

The standardized ground bases exist in two models:

- The 260mm base DAV007 is for roofs with up to 100mm of hydroinsulation.
- The 500mm base DAV008 is for roofs with up to 350mm of hydroinsulation.

Delivered with an aluminium cap, this highly durable stainless steel base can be mounted on concrete or steel structures.



## On Parapet model 2300mm

The parapet mounted bracket can be mounted on any parapet with a minimum height of 400mm above the hydroinsulation. The davit bases are custom made depending of the characteristics of the parapet.



# Structures - Hydroisolation

Fallprotec supplies davit bases in galvanised steel or stainless steel depending of the configuration. The design of the bracket must be adapted to the eventual presence and thickness of hydroinsulation. Special focus is put on waterproofness.



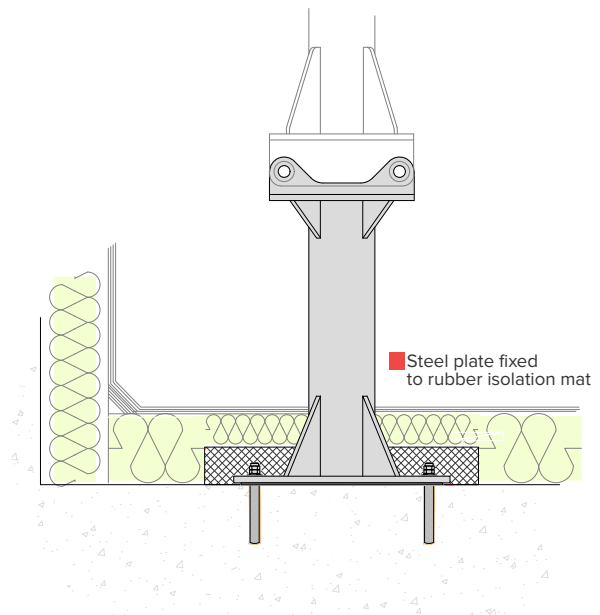
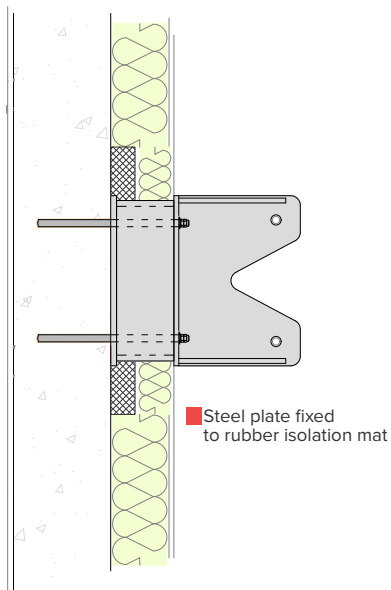
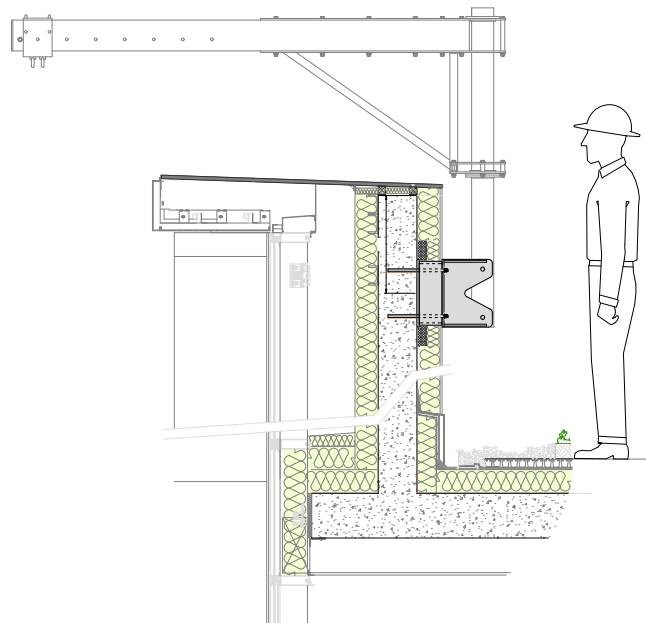
Beams



Concrete



Green Roofs





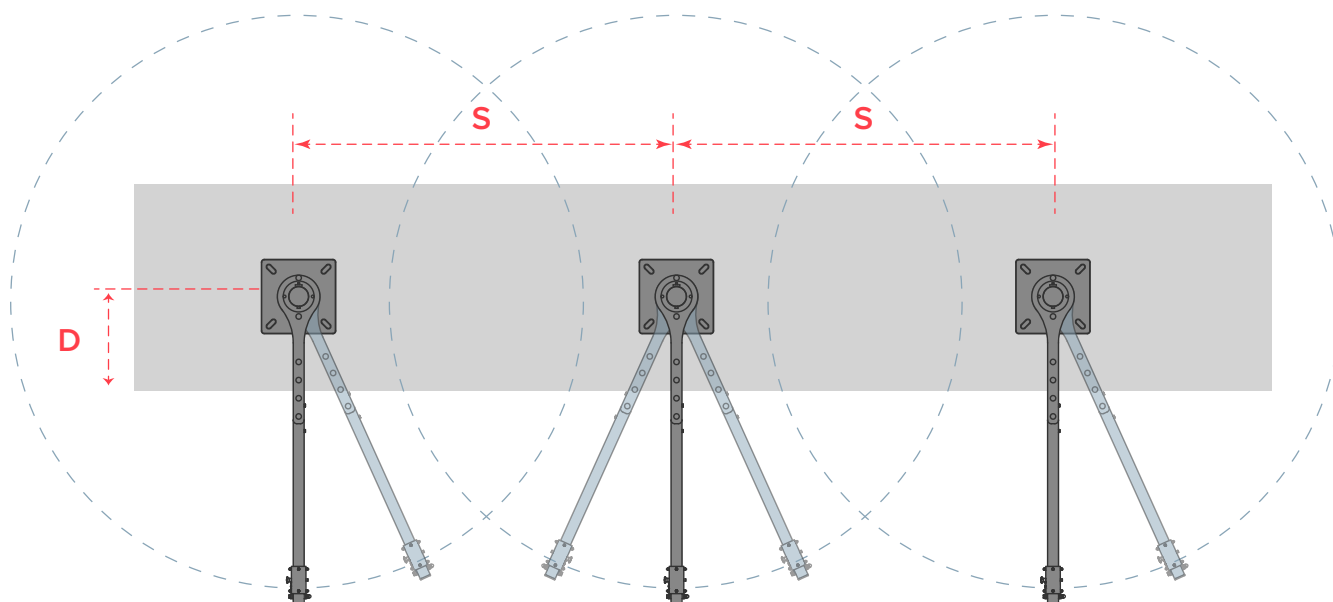
# Layout

Our Davit Arms are fixed to the roof with bases installed at regular intervals every 2 meters along the perimeter of the building. The spacing of the davit bases may be adjusted depending of:

- D = the distance between the base and the most protruding element of the façade.
- If the davit arm serve also to replace windows.

At end of the work, the davit is dismantled and stored.

Our engineering department expertly executes the implantation process with utmost precision and technical proficiency, ensuring seamless integration of our solutions into each project.



	S max (mm)	D max (mm)	Minimal distance from façade and suspension point (mm)
Case 1	2000	1000	400
Case 2	3000	500	400

The minimal distance recommended for Rope access and Ropeclimber is 400 mm.  
When used with Ropeclimber 1 person cradle, then 600 mm is recommended.

# Fallprotec's Davit arms for suspended equipment

[Click here to view more  
case studies worldwide  
on our website](#)



## CHOOSING FALLPROTEC MEANS

- One reference for global assistance
- Certified by notifying bodies as per latest European standard
- Quality control: ISO9001:2015.  
E.C. Quality of Production « Article 11D »
- Product liability insurance
- Warranty
- One-Stop-Shop





📍 Maintenance of Machinery  
Budapest



📍 Facade maintenance of multipurpose building  
Johannesburg, South Africa





📍 Maintenance of facades of Youth Hostel  
Esch-Sur-Alzette, Luxembourg





### **FALLPROTEC SA**

ZARO 2-4 rue Gustave Loosé  
8346 Grass  
Luxembourg

T: +352 26 55 09 30  
[marketing@fallprotec.com](mailto:marketing@fallprotec.com)

### **FALLPROTEC SL**

Eduard Calvet i Pintó 4  
Pol. Ind. Vallmorena  
08339 Vilassar de Dalt  
Espanya

T: +34 93 114 22 31  
[info@fallprotec.es](mailto:info@fallprotec.es)

### **FALLPROTEC ITALY**

Via Giovanni Falcone 23  
24050 Zanica Bergamo  
Italy

T: +39 375 713 8515  
[va@fallprotec.com](mailto:va@fallprotec.com)

### **FALLPROTEC USA**

3500 S Dupont Hwy  
Dover, DE 19901  
USA

T: +1 205 388 0548  
[usa@fallprotec.com](mailto:usa@fallprotec.com)

### **FALLPROTEC ME**

JLT, Mazaya Business Avenue,  
Tower BB1, Oce 1108  
P. O. Box 487115  
United Arab Emirates

T: +971 4 399 3764  
[eh@fallprotec-me.com](mailto:eh@fallprotec-me.com)

+352 26 55 09 30  
[www.fallprotec.com](http://www.fallprotec.com)

Follow us

[fallprotec](#) | [f](#) [@](#) [in](#) [You Tube](#)

# **FALLPROTEC**

Height Safety Products

