

FALLPROTEC ANCHOR POINTS





📍 Belgium

ANCHOR POINTS FOR FALL ARREST & FALL RESTRAINT

EN795:2012 Type C | CEN/TS16415:2013
OSHA 1910 Subpart D
OSHA 1926 Subpart M
ASSP/ANSI Z359.1 & ASSP/ANSI Z359.18
CSA Z259.15



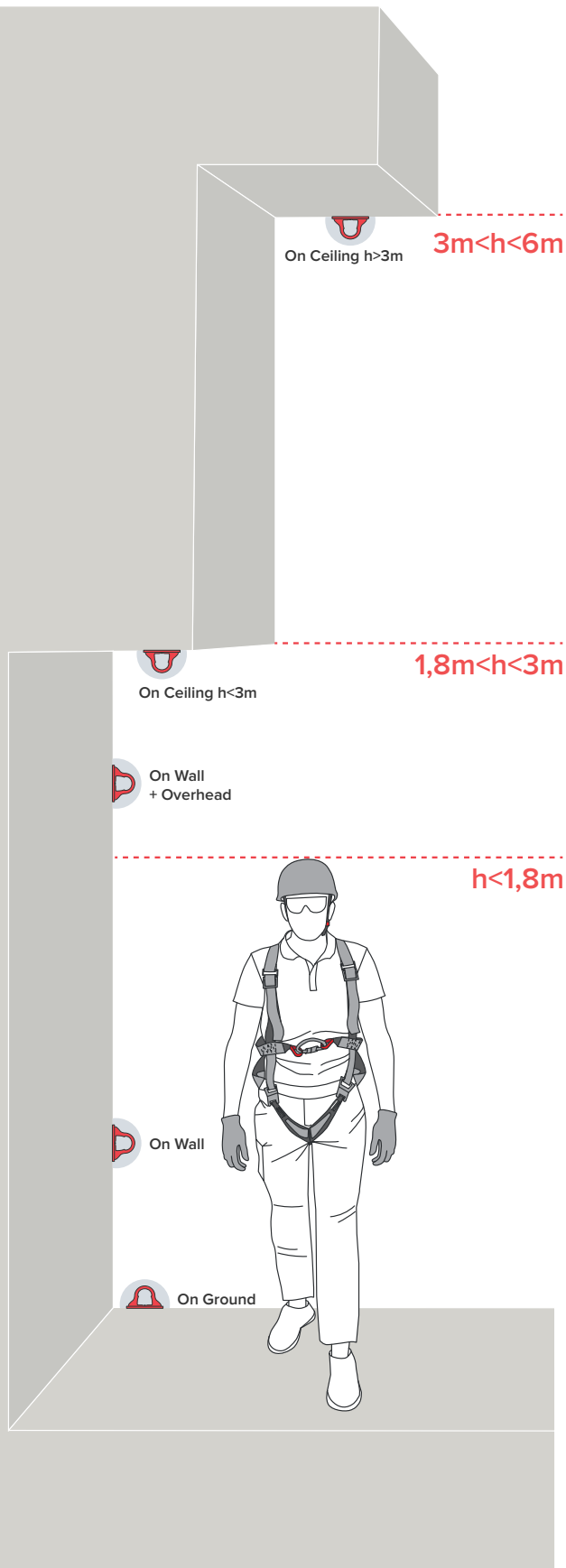
Fallprotec has a wide range of anchor points for all application types.

These are used as fall arrest systems, restraint systems or for work in suspension.




The user connects with a lanyard, a self-retracting lanyard (SRL), or rope access equipment.

Both temporary and permanent anchor points are available.








Why Fallprotec's solutions?



Type of Configurations

-  Ceiling configuration
-  Wall configuration
-  Ground configuration

Thanks to Fallprotec's solutions, these configurations can be mounted on all types of roofs and surfaces such as :

-  Cold Deck Roofs
-  Hot Deck Roofs
-  Standing Seam Roofs
-  Steel Beams
-  Green Roofs
-  Concrete
-  Custom solutions are designed by Fallprotec's engineers

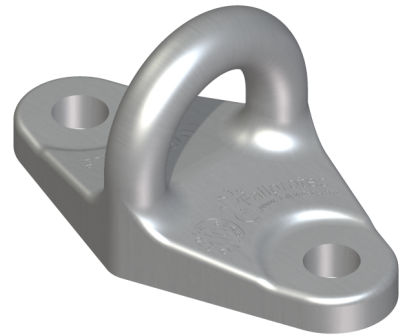
Anchor points on Rigid structures

LDV057 - Twinfix anchor point

This permanent roof anchor can stop the fall of up to 2 persons (EU) or 1 person (US). It can stop a fall without any permanent deformation. It is a reliable model for fall arrest, fall restraint and rope access and it can be fixed with 2 x M12 bolts.



 EN X 2 US X 1	 AISI 316	 >30kN	Type A
--	---	---	--------



PTA016 - Twinfix XL anchor point

The Twinfix XL has a large opening of 50x50mm to facilitate the connection of big carabiners even at a distance. It can be mounted on concrete anchor post and fixed in steel with in 1 x M12 bolt (steel) and in 2 x M12 bolts (concrete). It is a reliable model for fall arrest, fall restraint and suspended rope access.



 EN X 2 US X 1	 AISI 316	 >30kN	Type A
--	---	---	--------



LDV140 - SECURA end anchor / SECURA anchor point

The Secura anchor point is permanently installed on a building or any other structure to protect people that are at risk of falling when carrying out maintenance work.



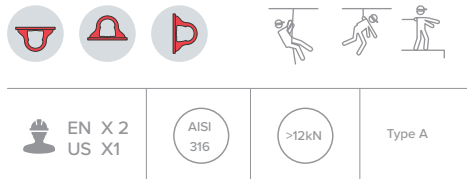
 EN X 2 US X 1	 AISI 316	 >25kN	Type A
--	---	---	--------



Anchor points on Rigid structures

LDV074 - Anchoring eyeplate

The combination of an anchoring eye plate and an anchor bolt 12 form an EN795 anchor point. This anchoring eyeplate is ideal because of its economical design and its quick mounting. It's compact, discreet and could be fixed on concrete.



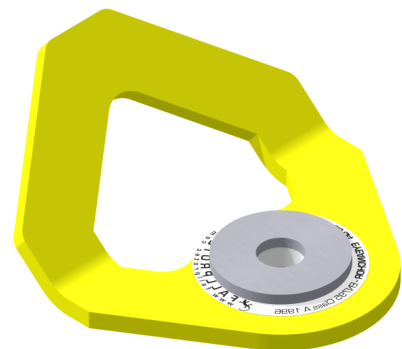
PTA026 - Big opening anchoring eyeplate | XL anchor point

The XL eyeplate enables the connection of big karabiners thanks to its large opening.



LDV029 - Anchor point, large opening, to be fixed on ground or wall

Anchor point in stainless steel, powder coated to increase visibility. The anchor point is rotative to follow the end user.



Anchor points on Rigid structures

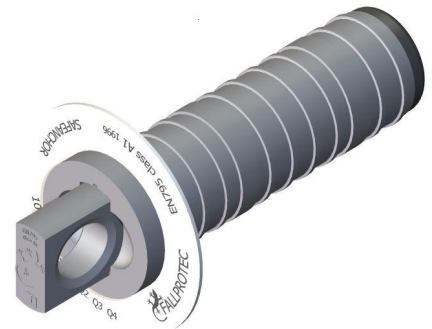


LDV055 - SafeAnchor 90

The SafeAnchor is a spring loaded and discreet anchor point to be fitted in office buildings where the windows are openable. It can be embedded in concrete and the anchoring eye appears by a simple pressure on the device. It can be installed on ground, wall and ceiling. It is a reliable model for fall arrest and fall restraint.



 X 1	AISI 316	>25kN	Type A
---	----------	-------	--------

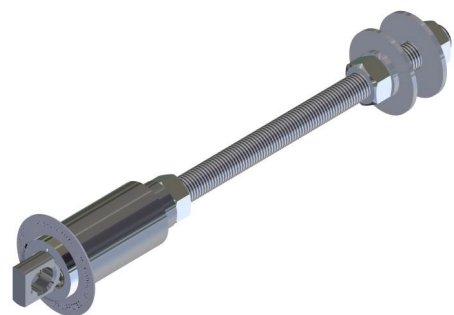


PTA017 - SafeAnchor 200

The Safeanchor is set by chemical sealing in concrete or bolted to a steel structure. The user attaches to the anchor via a lanyard equipped with a energy absorber or retractable block. A simple touch brings out the anchor point. When not used, the Safeanchor is flush against the wall surface. All system components are permanently attached.



 X 1	AISI 316	>25kN	Type A
---	----------	-------	--------




Anchor points on insulated roofs

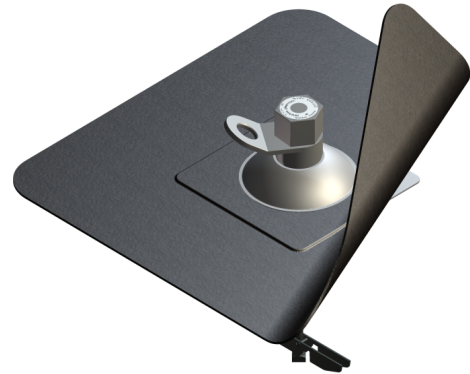
LDV049 SpotAnchor fixed on hot deck roof

The SpotAnchor is a single anchor point for trapezoidal metal roofs with insulation and membrane. Fallprotec supplies this single anchor point with bitumen, PVC-P membrane or without membrane, so that the client/roofer can glue any membrane of its choice.

Delivered with one central toggle bolt it has limited thermal bridges. The rotating anchor point follows the movement of the user.



	EN X 2 US X 1		
---	------------------	---	---



Multipost or Unipost for wooden or hollow concrete roofs

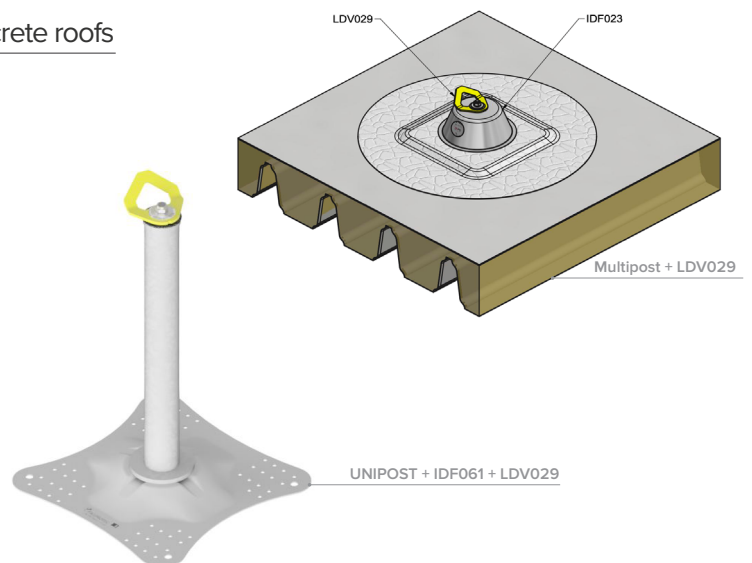
Fixing fall arrest or restraint anchor points on fragile structures such as wood or hollow concrete is made possible by using the Multipost or the Unipost design.

These systems share the load on a larger surface and/or absorb energy.

The rotating anchor point follows the movement of the user.



	EN X 2 US X 1			
---	------------------	---	---	---





Rigid post with yellow anchor point

The rigid post with anchor point can be installed to protect specific areas of a flat roof or for abseiling.

The rotating anchor point follows the movement of the user.



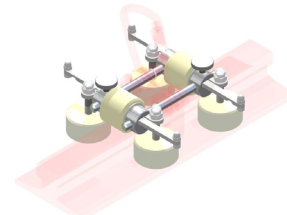
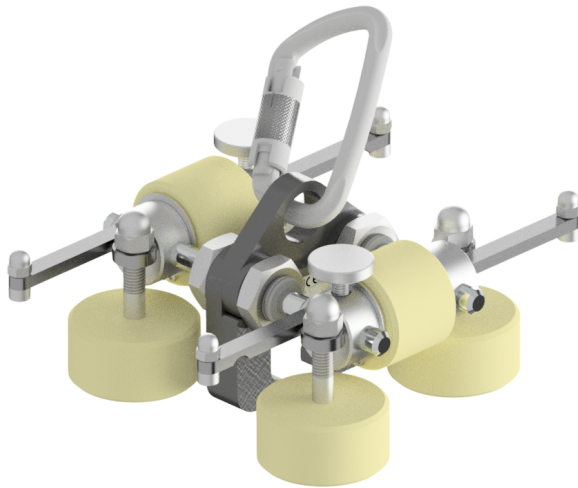
	EN X 2 US X 1			
---	------------------	---	---	---



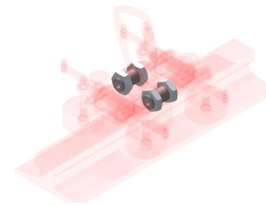
Temporary Anchor points



PTA001 | PTA002 | PTA003 - Mobile anchor point



PTA001 - Trolley for mobile anchor point on overhead crane rail



PTA002 - Pair of holder



PTA003 - Clamps for overhead crane rails & "H" profiles

The B-Clamp is a mobile anchor point that can run on gantry crane profiles (type A) or on IPE & HEB beams. The trolley is composed of a fall arrest clamp and wheels and secure the operator while working in industrial halls or roofs.



X1	AISI 304	>35kN	Type B
----	----------	-------	--------



PTA019 - Mobile anchor point for gantry trains*



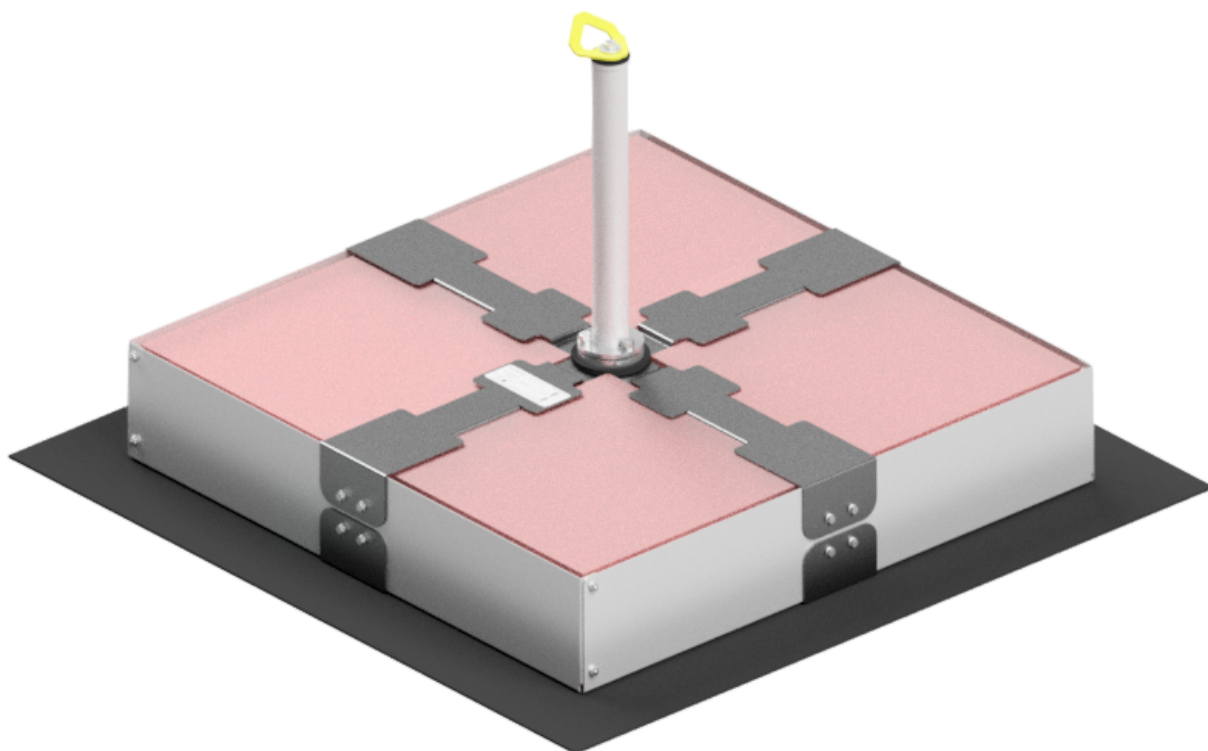
The PTA019 anchor point is clamped on standard I and H beams between 7,7mm to 30,3mm. The clamp is easily adjustable thanks to it's opening & closing mechanism. Enables to secure technicians while working in industrial facilities or steel construction.



X1	ALU	>35kN	Type B
----	-----	-------	--------

Ballasted Anchor Points

 PTA028 - BlockAnchor anchor point



This anchor point includes a BlockAnchor interface which is a weighted support designed for flat bitumen roofs with a maximum pitch of 5°.

The weight is distributed evenly over an area of 1,12x1,12m.

The counterweights are standard concrete blocks of 50x50x4cm weighing 22.5kg each.



 EN X 2	 >20kN	Type E
--	---	--------

Fallprotec's Anchor Points' worldwide

[Click here to view more
case studies worldwide
on our website](#)



CHOOSING FALLPROTEC MEANS

- One reference for global assistance
- Certified by notifying bodies as per latest European standard
- Quality control: ISO9001:2015.
E.C. Quality of Production « Article 11D »
- Product liability insurance
- Warranty
- One-Stop-Shop



📍 Airoport's roof maintenance
Brussels, Belgium



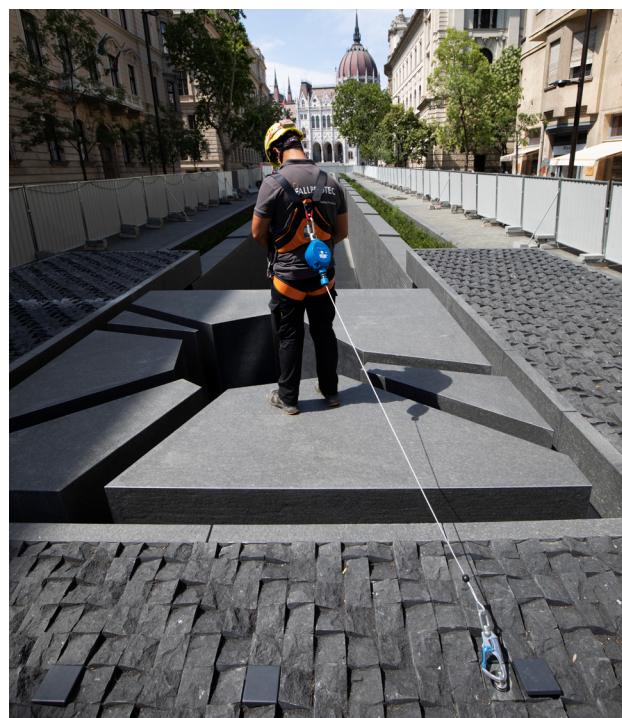
📍 Karlstad University
Karlstad, Sweden



Roof Maintenance Belgium



📍 Maintenance of confined spaces Hungary



📍 Roof Maintenance
Poland



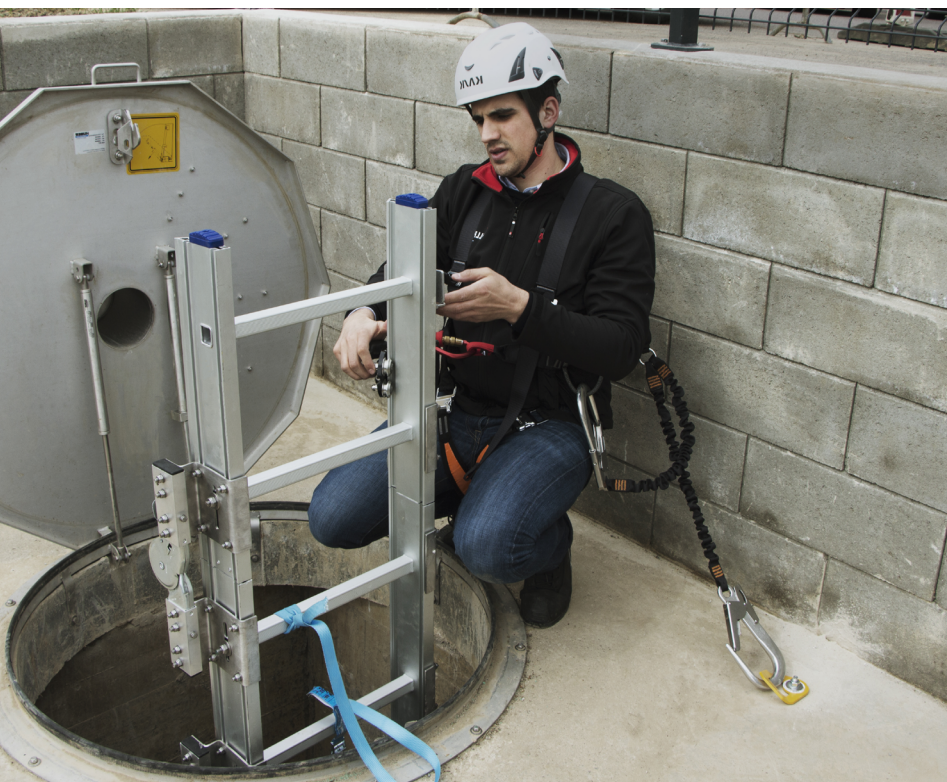
📍 Roof Maintenance
Charleroi, Belgium



📍 Maintenance of blast furnace
Belval, Luxembourg



📍 Confined space Maintenance
Luxembourg



FALLPROTEC SA

ZARO 2-4 rue Gustave Loosé
8346 Grass
Luxembourg

T: +352 26 55 09 30
marketing@fallprotec.com

FALLPROTEC SL

Eduard Calvet i Pintó 4
Pol. Ind. Vallmorena
08339 Vilassar de Dalt
España

T: +34 93 114 22 31
info@fallprotec.es

FALLPROTEC ITALY

Via Giovanni Falcone 23
24050 Zanica Bergamo
Italy

T: +39 375 713 8515
va@fallprotec.com

FALLPROTEC USA

3500 S Dupont Hwy
Dover, DE 19901
USA

T: +1 205 388 0548
usa@fallprotec.com

FALLPROTEC ME

JLT, Mazaya Business Avenue,
Tower BB1, Oce 1108
P. O. Box 487115
United Arab Emirates

T: +971 4 399 3764
eh@fallprotec-me.com

+352 26 55 09 30
www.fallprotec.com

Follow us

fallprotec |    

FALLPROTEC

Height Safety Products

