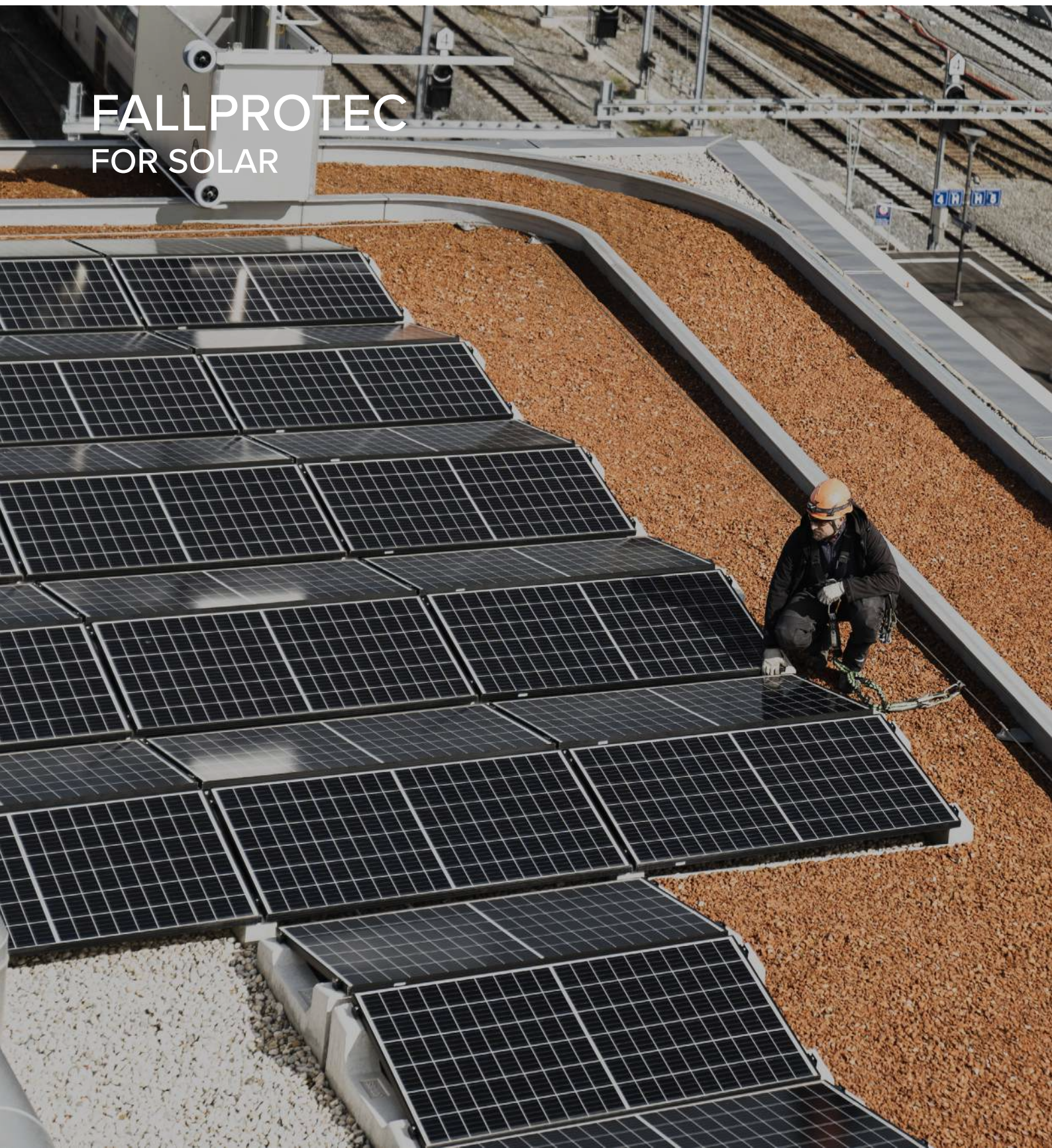


FALLPROTEC

Height Safety Products

+352 26 55 09 30 | www.fallprotec.com

FALLPROTEC FOR SOLAR





📍 Luxembourg

FALLPROTEC'S RANGE ELIMINATES THE RISK OF FALLING FROM HEIGHT.

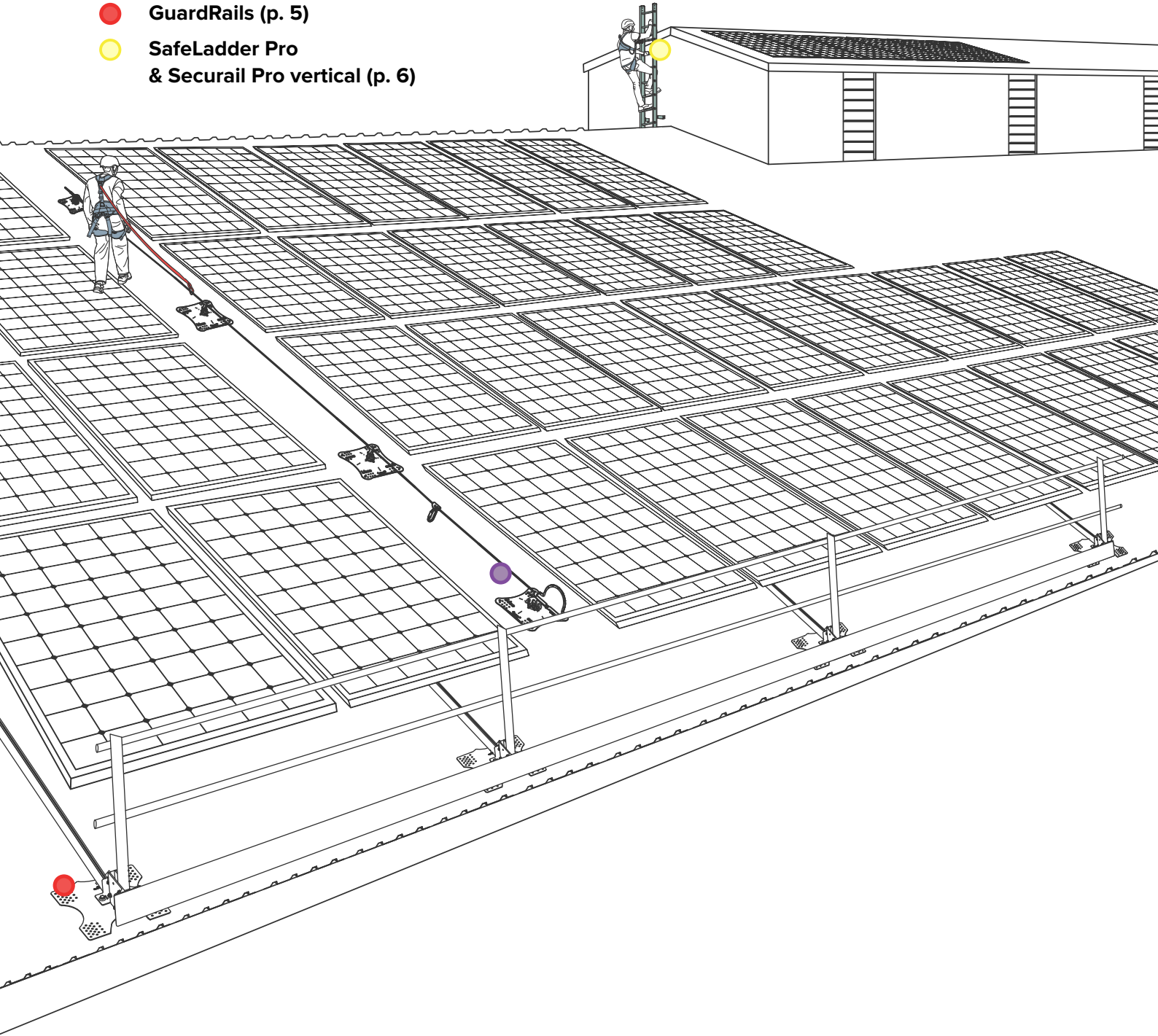
Solar panels have become increasingly prevalent on rooftops, playing a pivotal role in maximizing energy efficiency. However, it's essential to recognize that these solar installations demand consistent maintenance and cleaning to ensure they operate at peak performance. Regrettably, falls from ladders or roofs have emerged as a prominent cause of injuries in this context. Therefore, it's critical to address safety concerns when it comes to solar panel maintenance.

Fallprotec specializes in the design and provision of comprehensive turnkey solutions to ensure the continuous safety and security of workers who perform tasks at elevated heights.



Links:
*<https://www.hse.gov.uk/statistics/fatals.htm>
E.U. statistics: <https://bit.ly/3GwbVhs>
USA Statistics: <https://bit.ly/3siZPmM>

- SecuRope Horizontal (p. 4)
- GuardRails (p. 5)
- SafeLadder Pro
& Securail Pro vertical (p. 6)



CHOOSING FALLPROTEC MEANS

- One reference for global assistance
- Certified by independent notifying bodies as per latest European
- Quality control: ISO9001:2015. E.C. Quality of Production « Article 11B »
- Product liability insurance
- Warranty
- One-Stop-Shop

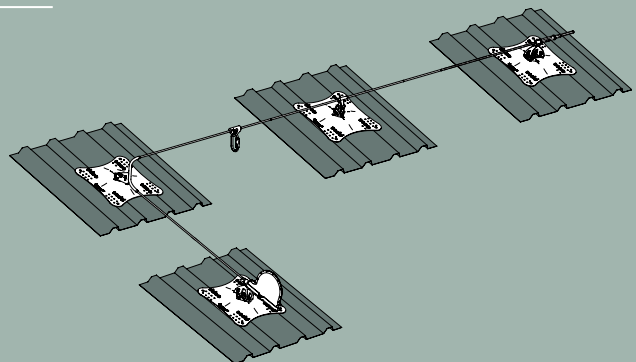


Securope Horizontal

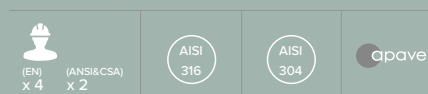
Securope Cable lifeline system on Cold Deck Roof

Lifeline Securope 2012 fixed on corrugated metal sheet roofs allows protecting multiple workers against the risk of fall.

Thanks to its robust design, the Securope 2012 is a reliable system that enables a durable maintenance of the roof.



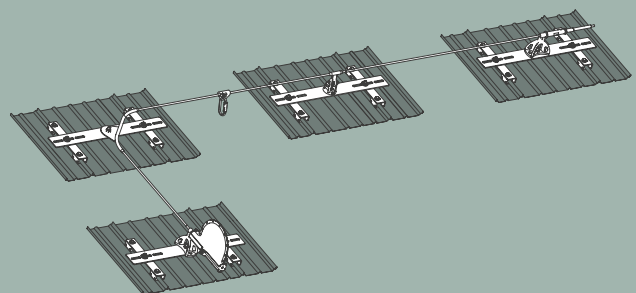
EN795:2012 Type C | CEN/TS 16415:2013
ANSI/ASSP Z359.6: 2009
OSHA1910 Subpart D
CSA Z259.16



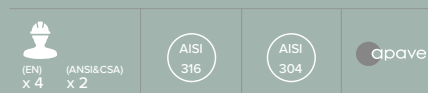
Securope Cable lifeline system on Standing Seam Roof

Securope lifeline on structures like standing seam roof could be fixed by fasteners designed by Fallprotec, thus, there's no need to pierce the panel.

Securope lifeline on standing seam roof, attached with Securope fixing assembly, does not jeopardize the integrity of the roof.

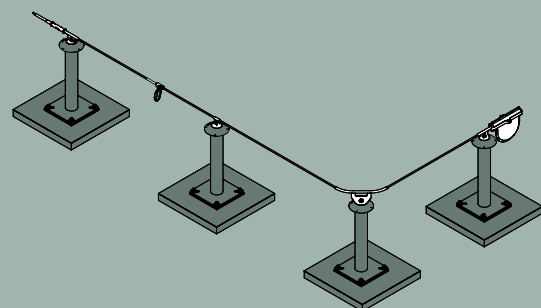


EN795:2012 Type C | CEN/TS 16415:2013
ANSI/ASSP Z359.6: 2009
OSHA1910 Subpart D
CSA Z259.16

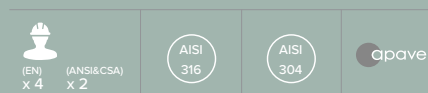


Securope Cable lifeline Securope EVO on post

The Securope EVO lifeline on post enables the end user to stay continuously connected while moving along the lifeline and passing the intermediate anchors and reaching safely any point of the structure. The Securope lifeline on rigid posts can be fixed on concrete structures or structural beams.



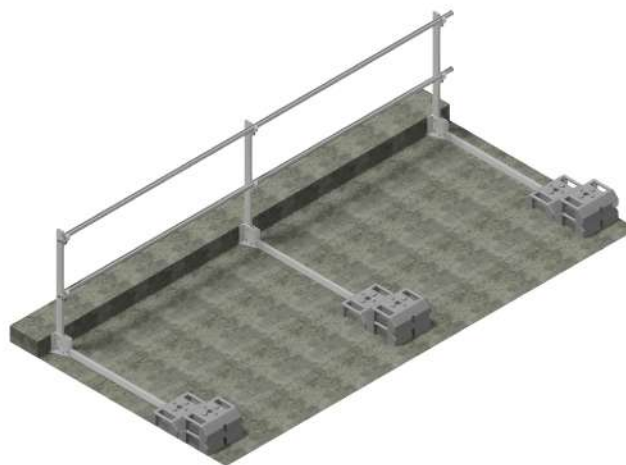
EN795:2012 Type C | CEN/TS 16415:2013
ANSI/ASSP Z359.6: 2009
OSHA1910 Subpart D
CSA Z259.16



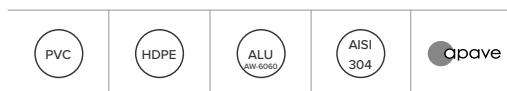
Guardrails

Guardrail with counterweights

The counterweighted guardrail must be installed on a flat roof (maximum slope 15°), when it is impossible to fix the guardrail to the structure of the building mechanically; this also preserves the tightness of the roof and eliminates thermal bridges.



EN 14122-3
EN 13374
NF E85-015
OSHA 1910.29 / 1926.502 BS 13700

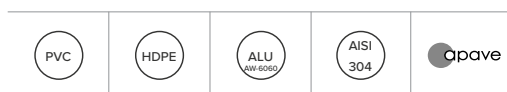


Guardrail fixed on cold deck

Unlike the counterweighted guardrail that must be installed on a flat roof, these guardrails are typically fixed securely to the cold deck roof structure and designed to withstand the harsh weather conditions associated with cold deck roofs.



EN 14122-3
EN 13374
NF E85-015
OSHA 1910.29 / 1926.502 BS 13700



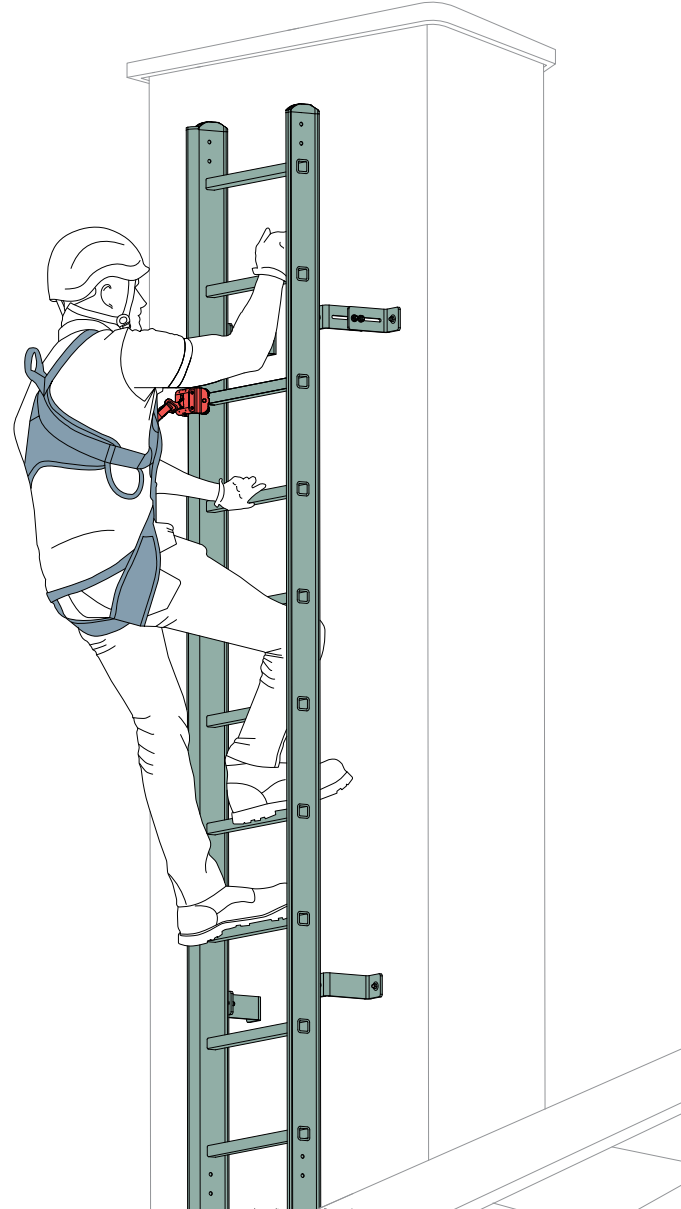
SafeLadder Pro & Securail Pro vertical

SafeLadder Pro

The SafeLadder is a elegant and secure alternative to traditional roof access ladders and confined space ladders. The user, equipped with a harness, is directly connected to the fall arrest rail which is integrated into the access ladder upright. The fall arrester VIA 4 fitted with energy absorber follows the user effortlessly and locks instantly in case of a fall. Various SafeLadder types and accessories are available to fit any situation: temporary SafeLadder, platform to cross the parapet, fold-up section for confined spaces, telescopic SafeLadder and traversing SafeLadder along a SafeAccess rail.

EN353-1:2014
ANSI 14.3 and OSHA1510 Subpart D

 x 1			
--	---	---	---



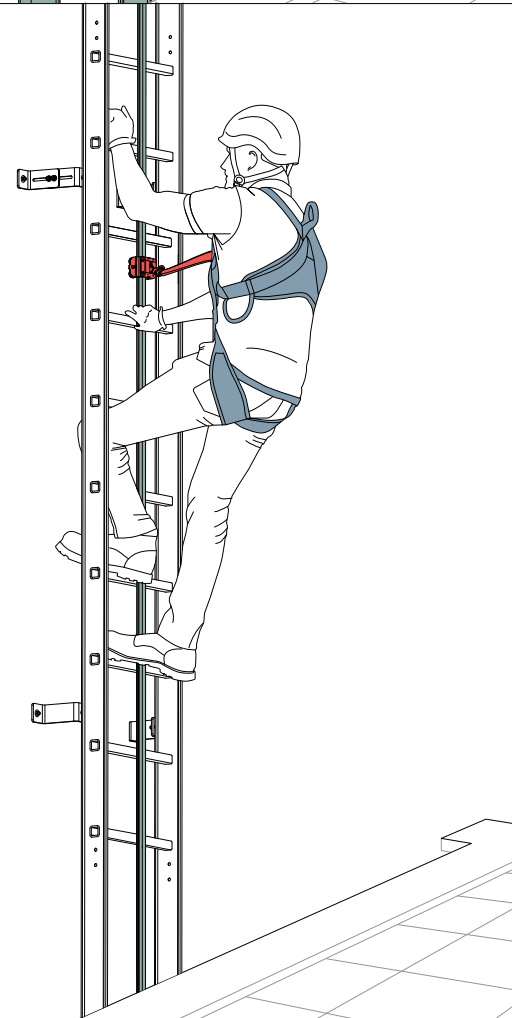
SecuRail Pro Vertical

The SecuRail Pro Vertical fall arrest is a rigid lifeline to secure access to any structure or roof. Clamped on an existing roof access ladder, this rail system secures the end user much better than the regular safety hoops. When equipped with foldable rungs, the SecuRail Vertical is a discreet system for architectural or residential buildings.

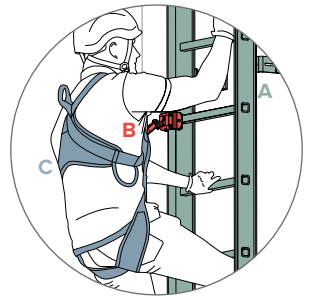
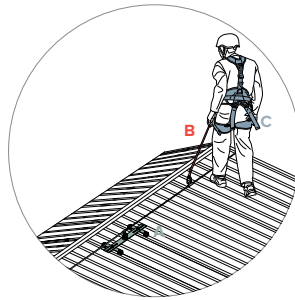
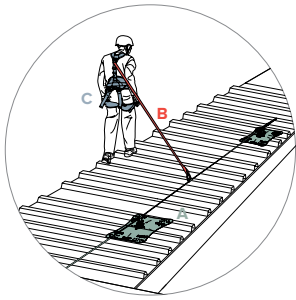
Entirely composed of high grade aluminium it is for pylons, confined spaces and industrial halls. Undeformable stainless steel brackets connect the ladders to the structure.

EN353-1:2014
ANSI 14.3 and OSHA1510 Subpart D

 x 1			
--	---	---	---



Fall protection & access equipment



A

Anchorage

Structure capable of supporting 6kN per user attached as part of a complete personal fall arrest system.

Fallprotec has designed an entire range of fixing assemblies suitable for most structure types. The internal engineering department of Fallprotec also offers bespoke fixation assemblies on demand.

Fallprotec lifeline systems:

- 1) SecuRope Cable Lifeline on cold deck roof
- 2) The SecuRail Pro Vertical
- 3) SecuRope Cable Lifeline on standing seam roof
- 4) SafeLadder Pro

All systems are suitable for intensive use in complex environments. Its components are in stainless steel, reliable and durable, designed to be extremely resistant to corrosion, fire and heat which therefore a greater durability and sustainability.

Fixing brackets:

Fallprotec has a wide range of bracket to fix on existing ladder or on the building.

B

Connecting Devices

PPE Equipment with energy-absorbing element to reduce the energy transmitted to the user's body in the event of a fall. Products such as shock absorbing lanyards or self-retracting lifelines connect a worker's harness to the anchorage.

Fallprotec PPE:

Self retractable lanyard

IHWS



 x 1  3,70  8,15

With aluminium casing and galva steel rope.

Trolley fitted with energy absorber

RHF518



EN353-1

 x 1  0,79  x 1
20mm opening
Aluminium

C

Body Support

A safety harness is a personal protective equipment (PPE) that is designed to catch a person in the event of a fall while working at height. Our full body harness distributes fall arrest forces across the shoulders, thighs and pelvis.

Fallprotec PPE:

Harness Prolight

HAR001 / 002 / 003



EN361:2012

 x 1  0,93  2,05

Resistant, lightweight fabric. Comfortable for the user.

Ergonomic helmet for works at height

HAR087



EN12492

 x 1

📍 Industrial roof
Switzerland



📍 Residential building
Brussels, Belgium



📍 Industrial roof
Switzerland



📍 Udyogi
India



📍 Roof and Solar panels maintenance
Namur, Belgium



📍 Maintenance of Huawei factory
Bangkok, Thailand



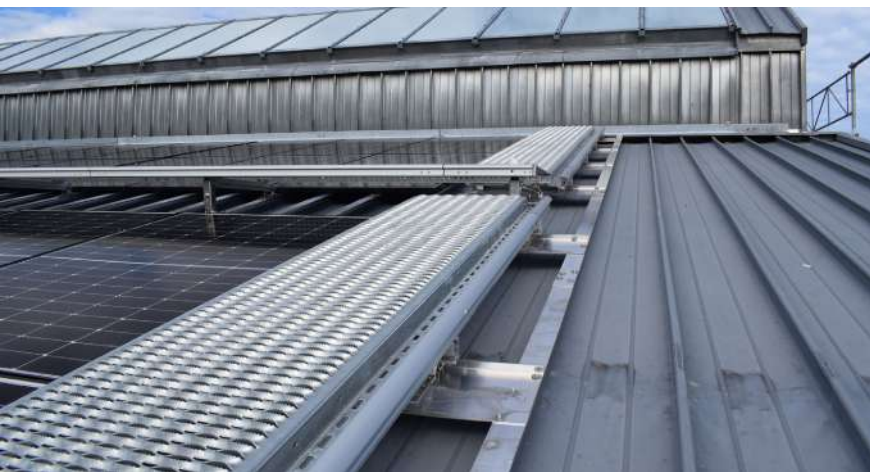
📍 Industrial roof
Bleesbruck, Luxembourg



📍 Maintenance of Maersk's roof
Copenhagen, Denmark



📍 Maintenance of Solar panels on industrial roof
Switzerland



FALLPROTEC SA

ZARO 2-4 rue Gustave Loosé
8346 Grass
Luxembourg

T: +352 26 55 09 30
marketing@fallprotec.com

FALLPROTEC SL

Eduard Calvet i Pintó 4
Pol. Ind. Vallmorena
08339 Vilassar de Dalt
España

T: +34 93 114 22 31
info@fallprotec.es

FALLPROTEC USA

3500 S Dupont Hwy
Dover, DE 19901
USA

T: +1 205 388 0548
usa@fallprotec.com

FALLPROTEC ME

JLT, Mazaya Business Avenue,
Tower BB1, Oce 1108
P. O. Box 487115
United Arab Emirates

T: +971 4 399 3764
eh@fallprotec-me.com

FALLPROTEC SRL

Via Giovanni Falcone 23
24050 Zanica Bergamo
Italia

T: +39 375 713 8515
va@fallprotec.com

+352 26 55 09 30
www.fallprotec.com

Follow us

fallprotec |    

FALLPROTEC

—
Height Safety Products

